



RFB Lighting

INSTALL INSTRUCTIONS

RFB MK6 JETTA FOG LIGHT KIT

7716 WILES RD. CORAL SPRINGS, FL 33067
WWW.USPMOTORSPORTS.COM

WHAT'S INCLUDED:

(2) FOG LIGHTS
(2) FRONT GRILLS
WIRE HARNESS
HEADLIGHT SWITCH
HARDWARE KIT

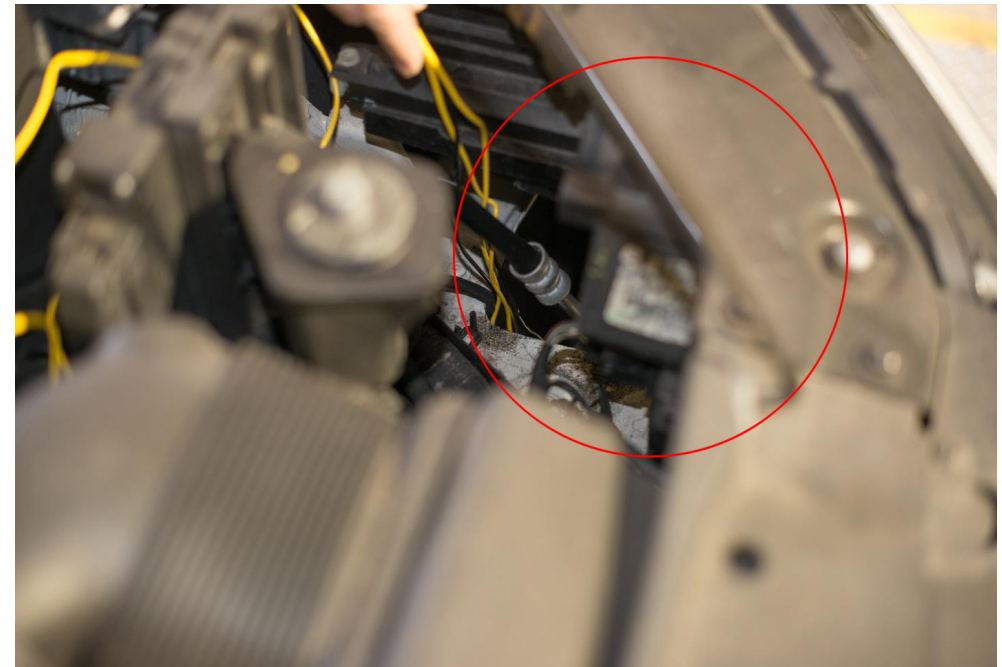
TOOLS REQUIRED:

T25 TORX
WIRE CUTTERS
10MM SOCKET AND RACHET
HEADLIGHT SWITCH
COMPOSITE WEDGE TOOL

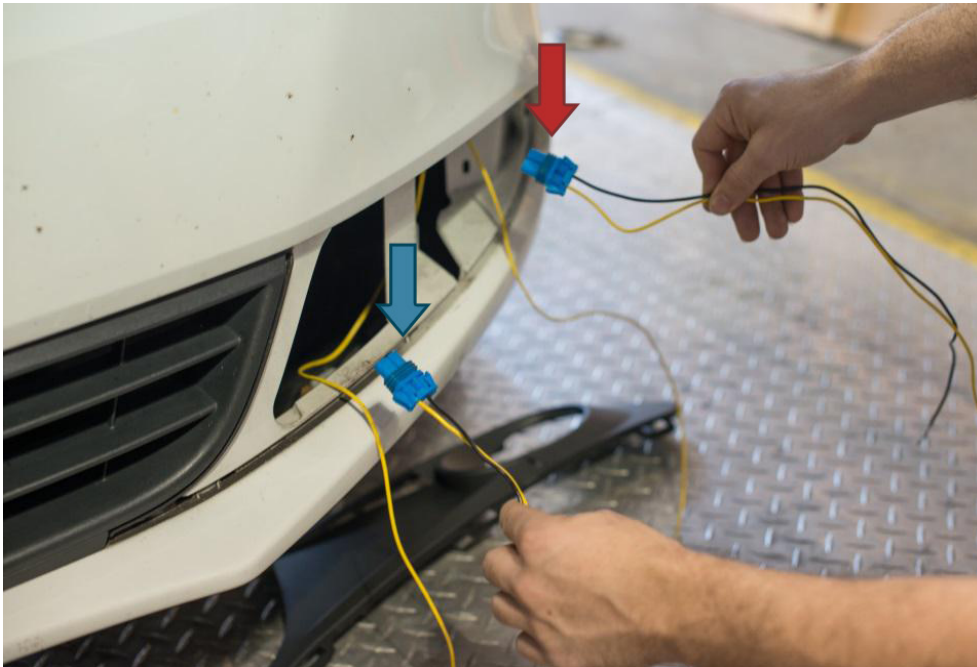
1. REMOVE THE LOWER FRONT GRILLS BY GENTLY PRYING THEM OUTWARDS USING THE COMPOSITE WEDGE TOOL.



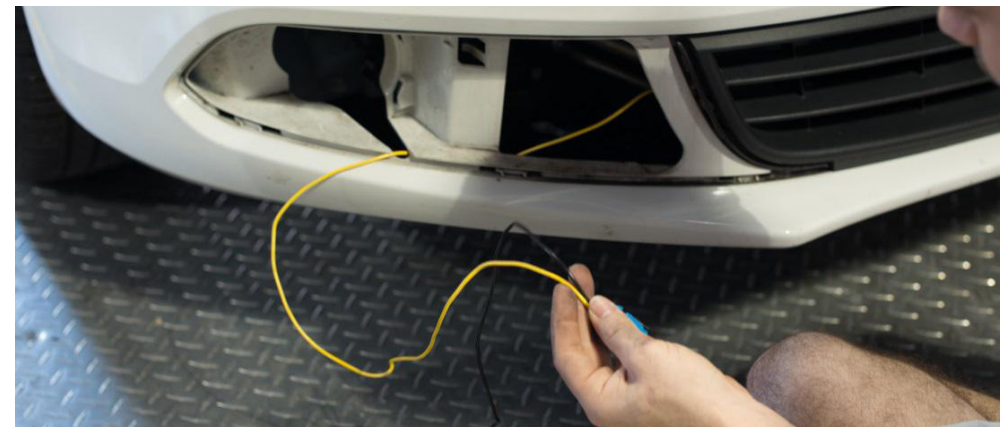
2. ROUTE THE SUPPLIED WIRE HARNESS THROUGH THE HOLE LOCATED BEHIND THE DRIVER SIDE HEAD LIGHT.



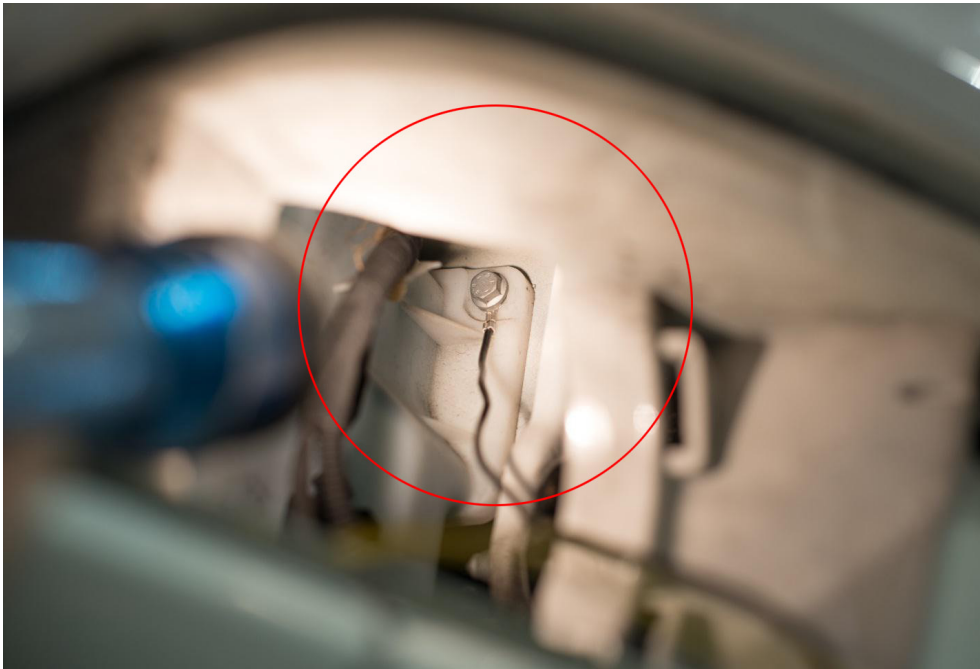
3. ROUTE THE SHORTER LEAD WITH THE BLUE PLUG THROUGH THE OUTER HOLE IN THE DRIVER SIDE OF THE BUMPER (RED ARROW). ROUTE THE LONGER LEAD WITH THE BLUE PLUG THROUGH THE INNER HOLE IN THE DRIVER SIDE OF THE BUMPER (BLUE ARROW).



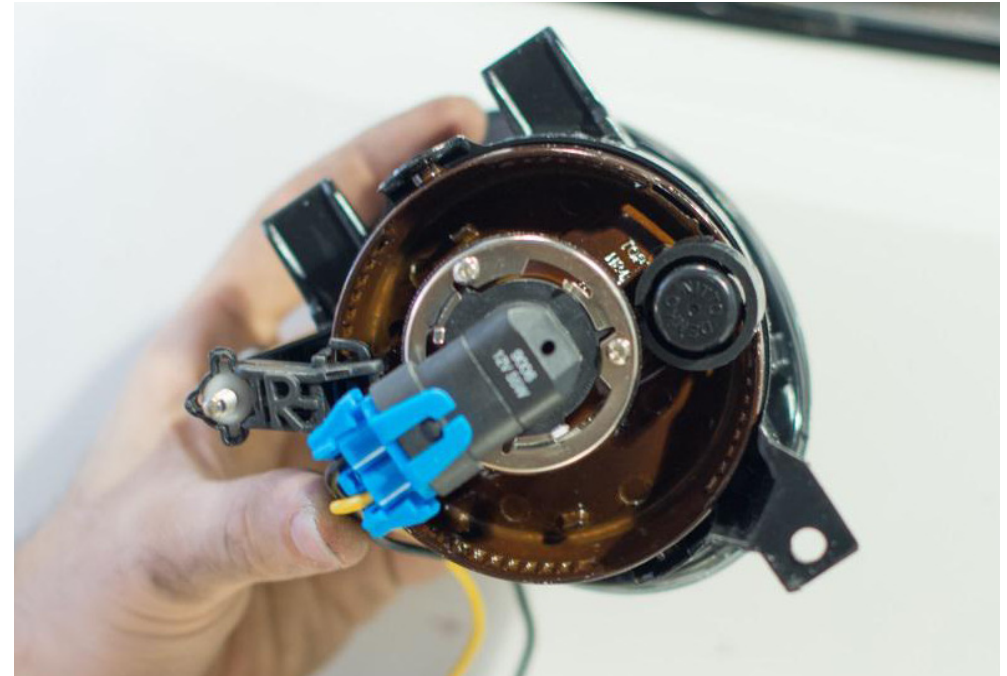
4. THE LONGER LEAD FROM STEP 3 WILL NEED TO BE ROUTED TO THE HOLE IN THE PASSENGER SIDE OF THE FRONT BUMPER. ROUTE THE LEAD THROUGH THE LOWER FRONT GRILL AND TUCK THE WIRES INTO THE BUMPER.



5. GROUND THE BLACK WIRE FROM THE PASSENGER SIDE CONNECTOR TO THE 10MM BOLT SECURING THE WASHER FLUID RESERVOIR.



6. CONNECT THE PASSENGER SIDE CONNECTOR TO THE PASSENGER SIDE FOG LIGHT. THE PASSENGER SIDE FOG LIGHT HAS A "R" ON THE REAR OF THE HOUSING.



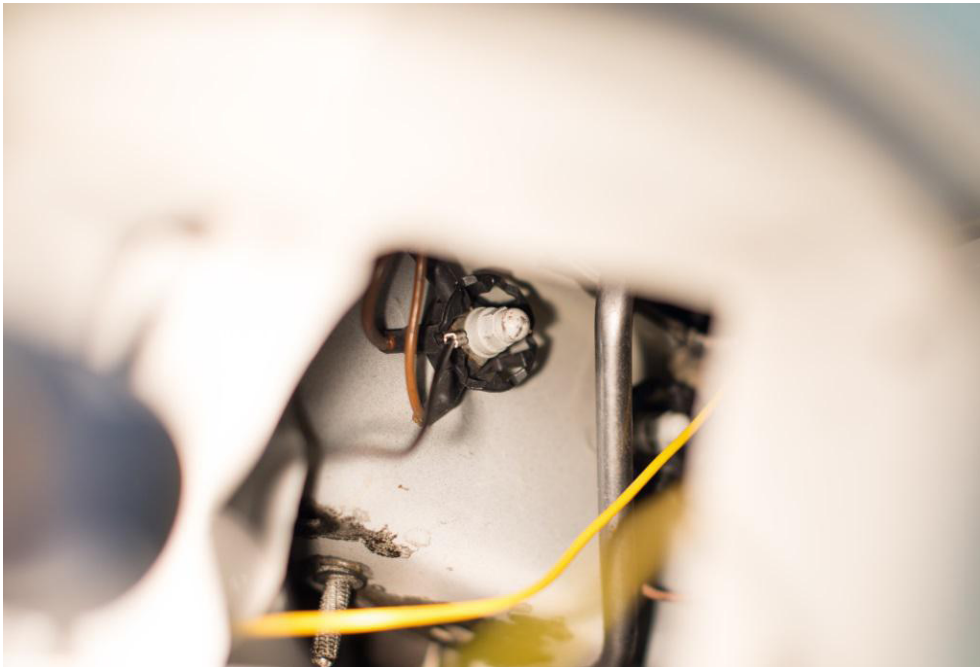
7. INSTALL THE FOG LIGHT BY INSERTING THE TWO LOCATING TABS INTO THE SLOTS IN THE BUMPER. ONCE THE TABS ARE IN PLACE, SECURE THE FOG LIGHT WITH A SUPPLIED T25 TORX SCREW.



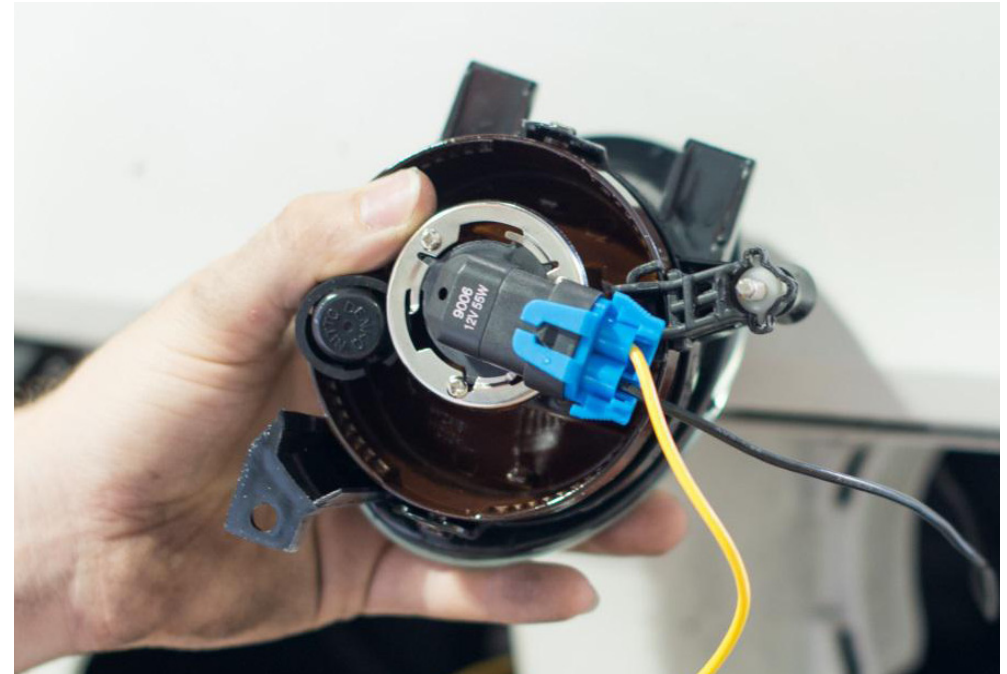
8. INSTALL THE SUPPLIED FOG LIGHT GRILL. STARTING FROM THE OUTER SIDE OF THE BUMPER, POP THE GRILL INTO PLACE MAKING SURE THE LOCKING TABS CLIP INTO THE BUMPER.



9. CONNECT THE BLACK WIRE FROM THE DRIVER SIDE CONNECTOR TO THE 10MM NUT LOCATED ON THE FRAME RAIL.



10. CONNECT THE DRIVER SIDE CONNECTOR TO THE DRIVER SIDE FOG LIGHT. THE DRIVER SIDE FOG LIGHT HAS A "L" ON THE REAR OF THE HOUSING.



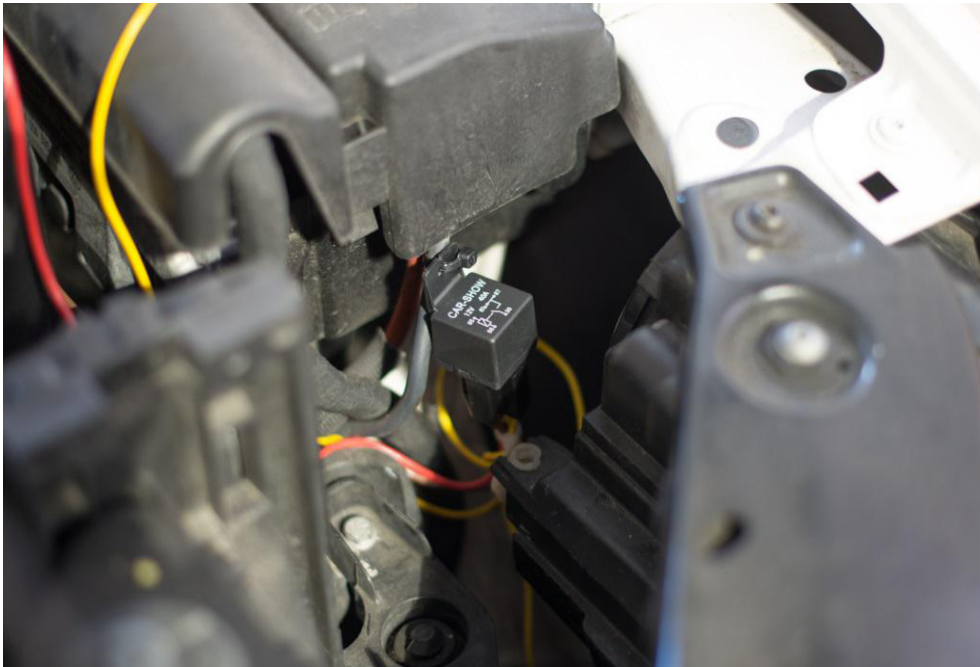
11. INSTALL THE FOG LIGHT BY INSERTING THE TWO LOCATING TABS INTO THE SLOTS IN THE BUMPER. ONCE THE TABS ARE IN PLACE, SECURE THE FOG LIGHT WITH A SUPPLIED T25 TORX SCREW.



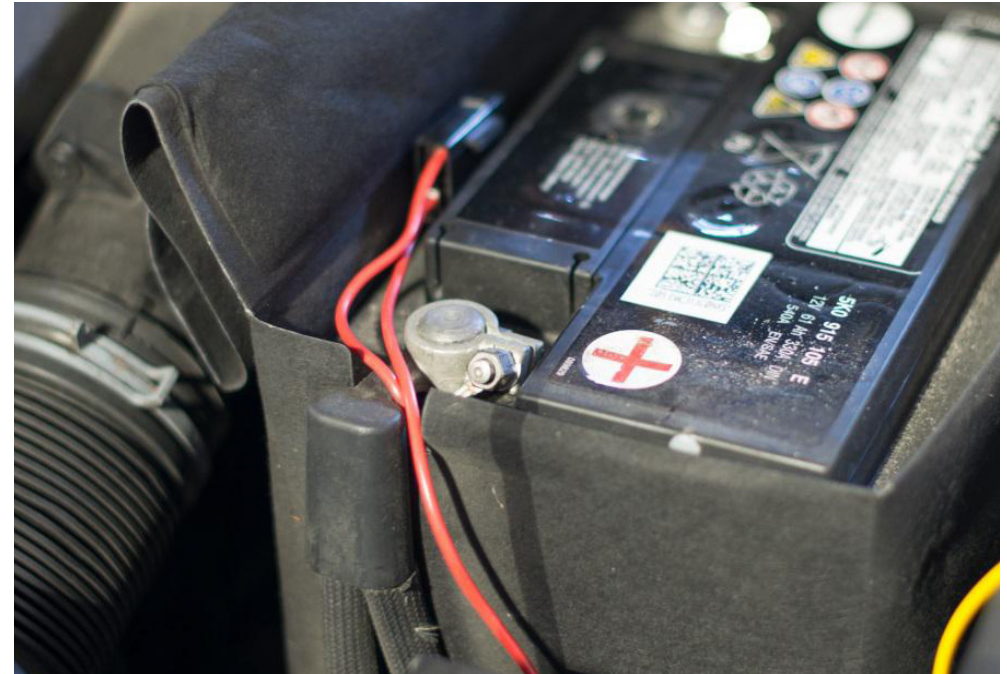
12. INSTALL THE SUPPLIED FOG LIGHT GRILL. STARTING FROM THE OUTER SIDE OF THE BUMPER, POP THE GRILL INTO PLACE MAKING SURE THE LOCKING TABS CLIP INTO THE BUMPER.



13. SECURE THE RELAY ON THE WIRE HARNESS TO THE FRONT OF THE FUSE BOX LOCATED BEHIND THE DRIVER HEADLIGHT.



14. CONNECT THE RED WIRE FROM THE WIRE HARNESS TO THE POSITIVE TERMINAL OF THE BATTERY AND THE BROWN WIRE TO THE NEGATIVE TERMINAL.



15. ROUTE THE LONG YELLOW WIRE ENDING WITH THE SILVER TERMINAL INSIDE THE CAR. USING A FISH TAPE OR WIRE COAT HANGER TO PULL THE WIRE THROUGH IS HELPFUL.

A. IF THE VEHICLE IS AUTOMATIC YOU CAN REMOVE THE INSULATION CUT OUT NEXT TO THE BRAKE PEDAL, MAKE A SMALL HOLE IN THE GROMMET, AND PULL THE YELLOW WIRE THROUGH.



B. IF THE VEHICLE IS MANUAL, YOU WILL NEED TO ROUTE THE WIRE THROUGH THE FACTORY WIRE HARNESS GROMMET TO THE LEFT OF THE CLUTCH PEDAL.

16. REMOVE THE HEADLIGHT SWITCH BY PRESSING THE SWITCH IN, TURNING CLOCK-WISE, AND THEN PULLING



17. ROUTE THE YELLOW WIRE UP TO THE HEADLIGHT SWITCH HARNESS.



18. INSERT THE YELLOW WIRE INTO POSITION 8 OF THE HEADLIGHT SWITCH HARNESS.



19. CONNECT THE HARNESS TO THE INCLUDED HEADLIGHT SWITCH AND PRESS THE SWITCH BACK INTO PLACE. IF YOU CURRENTLY HAVE THE RFB AUTOMATIC HEADLIGHT CONVERSION, THE INCLUDED SWITCH WILL NOT BE USED.

ENJOY YOUR FOG LIGHTS!

