



INSTALL INSTRUCTIONS

LED TAIL LIGHTS: MK6 JETTA
SKU# 2296 MFG# RFB-MK6J-TL

INSTRUCTIONS ARE ALSO AVAILABLE ONLINE FOR A MORE ENHANCED VIEWING.
PLEASE VISIT WWW.USPMOTORSPORTS.COM AND SEARCH SKU# 2296



TOOLS REQUIRED:

- (2) REAR TRUNK LED TAIL LIGHTS
- (2) REAR LED TAIL LIGHTS
- (2) WIRE HARNESSSES

WHAT'S INCLUDED:

- 11MM SOCKET WITH WRENCH
- T20 TORX
- RAZOR BLADE
- (10) ZIP TIES



SKU# 2296 | MFG# RFB-MK6J-TL

7716 WILES RD. CORAL SPRINGS, FL 33067
WWW.USPMOTORSPORTS.COM

1. Remove torx screws from location 1 and 2.



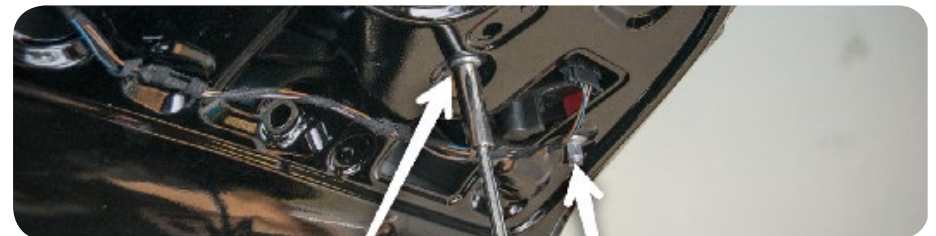
2. Pull down on the interior cover from the edges on one side. Gently moving your way along the entire piece, disengaging all the clips.



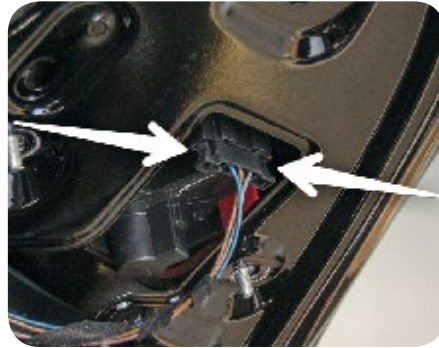
3. Once half of the interior cover from the lid has been loosened, remove the plastic shroud on the trunk locking mechanism.



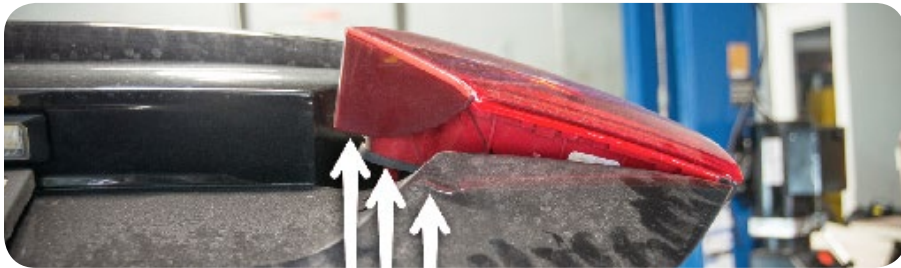
4. After you have removed the cover, there are (4) 11mm nuts holding the taillights in place. Only remove the nuts from one tail light at a time, leaving the opposing tail light safely in place for the moment.



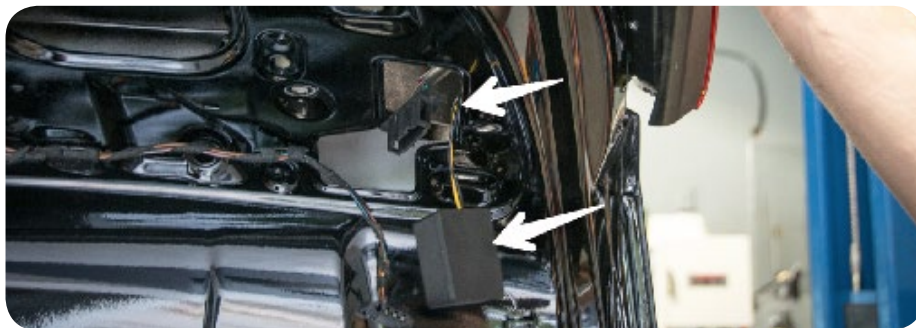
5. Push on the ends of the clip and unplug the connector from the tail light.



6. Apply pressure behind the tail light from inside the trunk, from the part closest to the license plate. Once the tail light is angled it will slide up and out.



7. Make sure to drop the wiring inside the trunk safely before mounting your new LED lights.



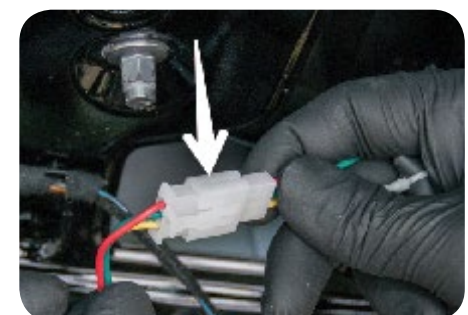
8. Begin mounting the lights by dropping them in at the same angle that the OEM lights were removed. Make sure the black plastic slides over the metal edge of the trunk as shown.



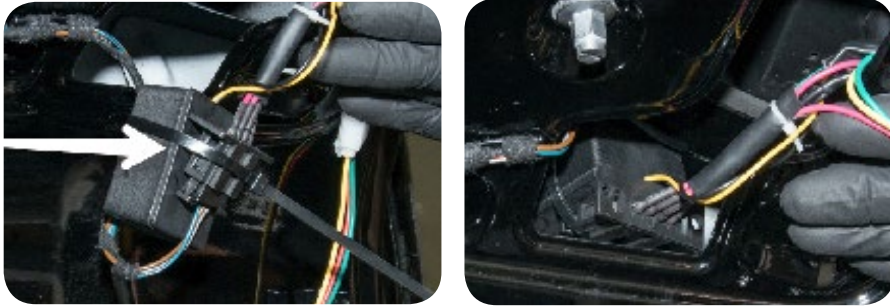
9. Once the tail light has slid from an angle into place over the edge of the trunk, it can be dropped straight into position. Tighten the two factory 11mm nuts to secure the new tail lights into place. This will also pull the light in flush with the trunk lid.



10. Connect the black clip from the tail light to the factory wire harness. Connect the white clip from the tail light to the white clip from the supplied wiring harness.



11. Secure the black box to the other wires. Place the black box and other wires inside the trunk and secure so they will not move around.



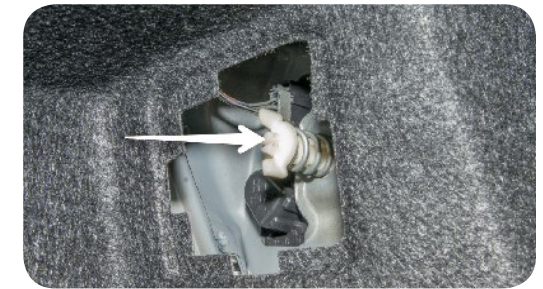
12. Run the new wiring harness down behind the trunk arm, and secure it using wire ties. Leave the wire end hanging, we will return to this in a later step.



13. Moving to the lower tail lights, locate the small door inside the trunk directly behind the tail lights. This door can be popped open as shown.



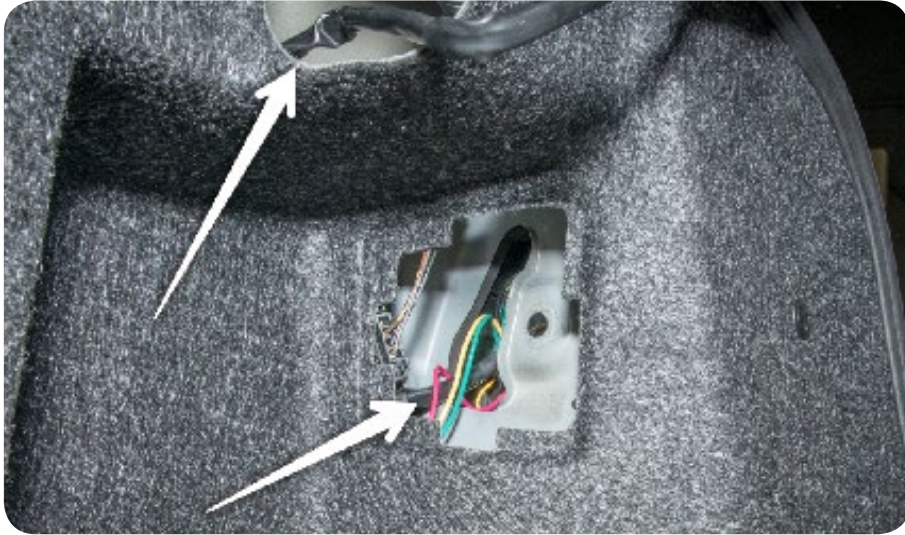
14. Behind the small door, loosen the plastic wing screw which holds the lower tail light in place.



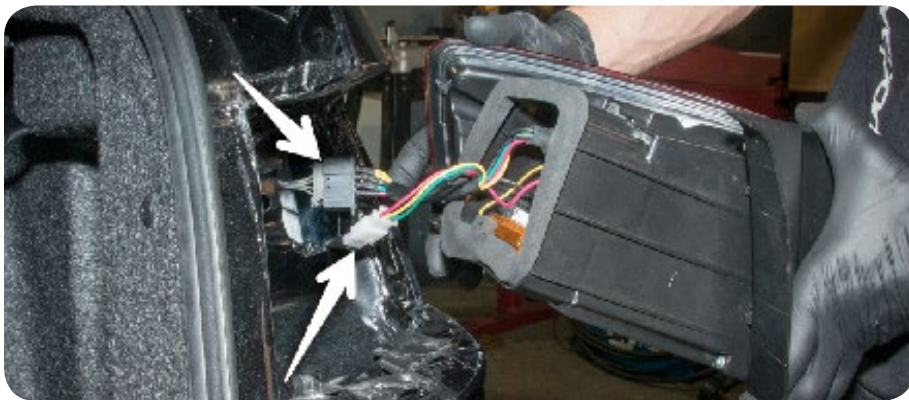
15. Remove the tail light gently just enough to reach behind it. Push in the ends of the clip and remove the connector allowing you to completely remove the factory lights.



16. Run the harness from Step 12 through the opening in the trunk as shown, and out of the hole to connect to the new tail lights.



17. Connect the factory harness to the new tail lights as well as the new harness. Replace the new tail light and secure using the OEM plastic wing screw. Then put the small door back into place.



18. Repeat steps 4 thru 11 for the driver's side tail light.

19. On the driver's side trunk arm, pop the tabs out of the cover.



20. Pop out the grommet in the trunk and run the harness inside the trunk from the tail light out of the grommet hole. Slit the grommet using a razor-blade.



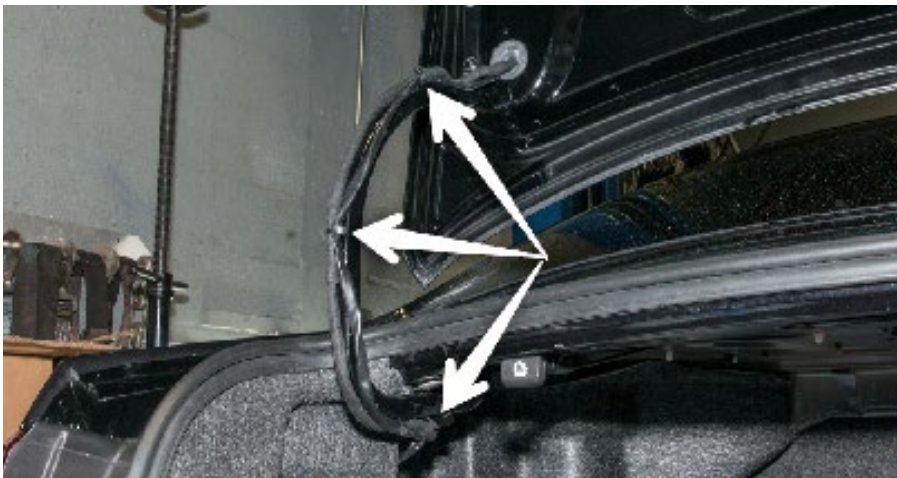
21. Run the new harness into the center of the grommet and pop the grommet carefully back into place.



22. Run the new wiring harness down behind the trunk arm and secure it using wire ties.



23. Feed the end of the wiring harness behind the trunk paneling and clip the trunk arm plastic cover back into place.



24. Repeat steps 13 thru 17 for the driver's side lower tail light.

25. Replace the interior cover from trunk, securing with the two OEM torx bolts.



26. Enjoy your new LED tail lights!

