



INSTALL INSTRUCTIONS

MK7 GTI ELECTRONIC FOLDING MIRROR CONVERSION

7716 WILES RD. CORAL SPRINGS, FL 33067

WWW.USPMOTORSPORTS.COM

WHAT'S INCLUDED:

1. DRIVER SIDE MIRROR ASSEMBLY
2. PASSENGER SIDE MIRROR ASSEMBLY
3. MIRROR SWITCH

TOOLS REQUIRED:

- PLIERS
- T-15 TORX
- T-30 TORX
- SOFT PRY TOOL
- VCDS CABLE
(ALSO KNOWN AS ROSS-TECH OR VAG COM)



Mirror and Switch Installation

1. Using a soft pry tool remove the trim panel on the driver side door handle.



2. Remove 2 T-30 torx screws.



3. On the bottom of the door panel, rotate the locking clip vertical.



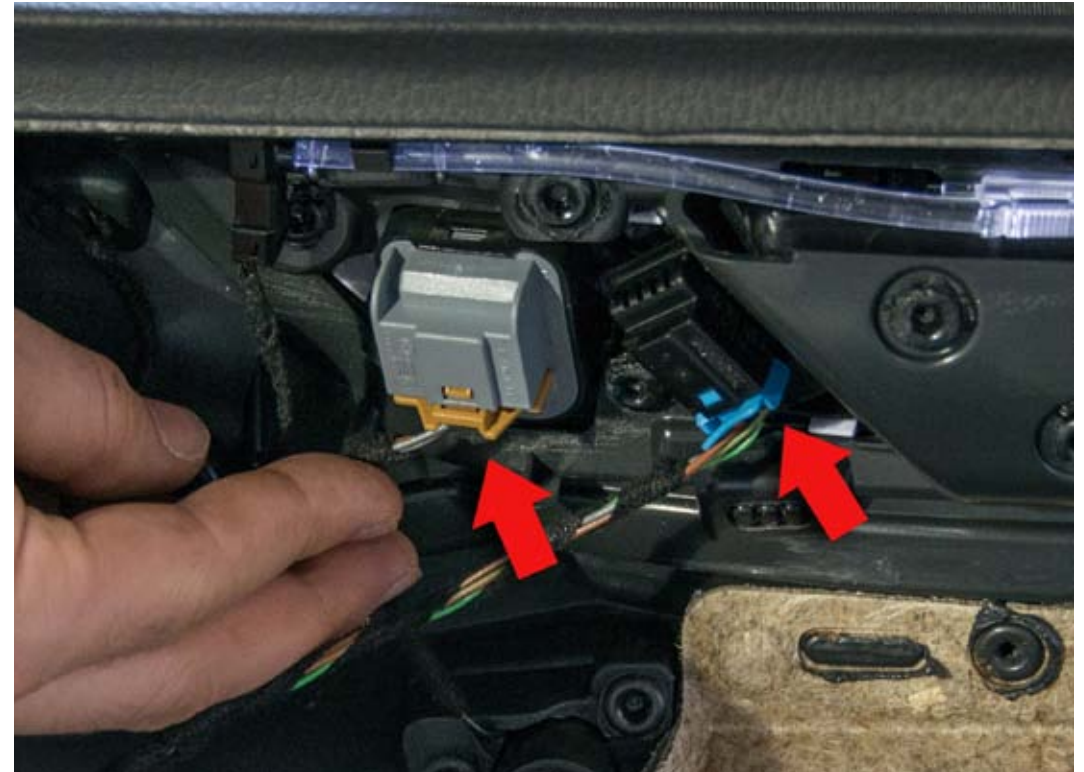
4. Grasp the bottom of the door panel and pull toward you. The panel is attached with strong plastic clips so this may take some effort.



5. Once the clips have been released, pull the door panel upwards. This will release the last clip and allow the panel to separate from the door.



6. Unplug the connector for the power mirrors and door locks on the back of the door panel.



7. Using a soft pry tool remove the factory power mirror switch.



8. Remove the lock button by prying on both sides to release the locking mechanism.
9. Install the lock button into the new mirror switch. Make sure both sides of the button are locked into place. Reinstall the mirror switch to the door panel snapping the side closest to the door handle in place first.



10. Unplug the connector for the factory mirror. The red locking clip will need to be pulled out before the connector can be released.



11. Remove the door module from door panel by pushing the bottom tab up and then lifting the module out.



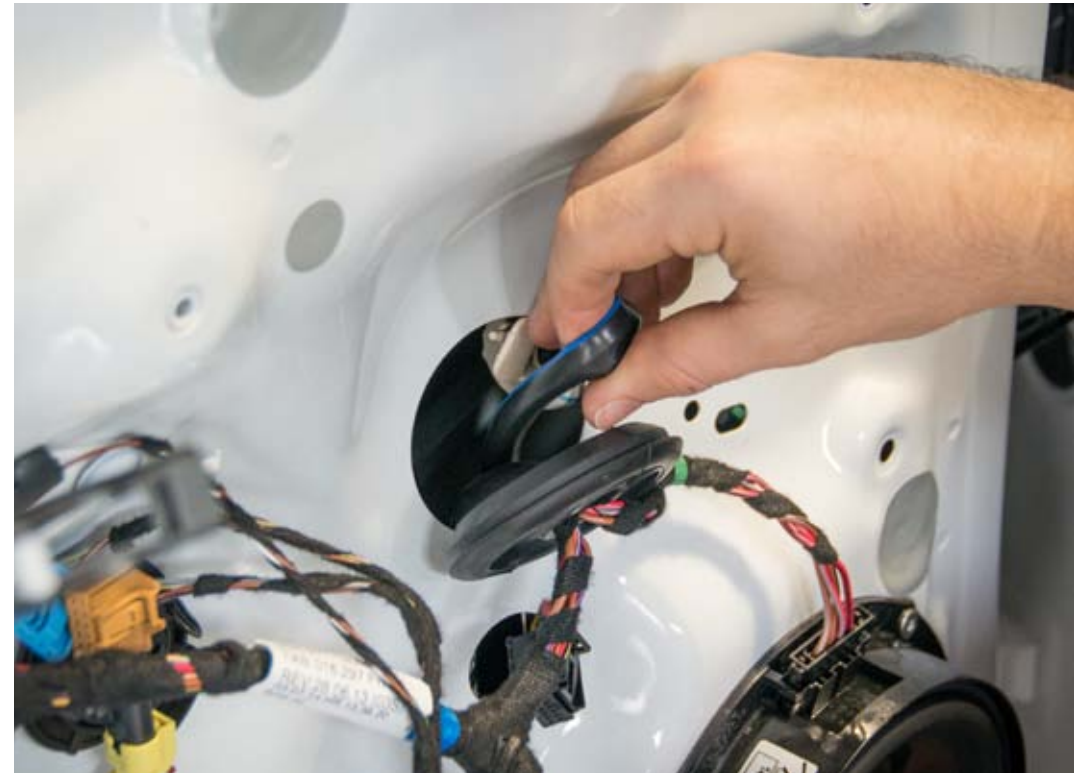
12. Release the green clip behind the module.



13. Remove the white grommet and push the power mirror wire into the door.



14. Remove the large black grommet from the door and pull the mirror wire through the opening.



15. Remove the cover concealing the screws to the mirror. Remove the 2 T-30 torx securing the mirror. When loosening the second bolt, be sure to support the mirror with 1 hand.



16. Remove the factory mirror from the door.



17. Route the wire harness for the new mirror between the window track and inside of the door.



18. Insert the new mirror and loosely secure it using the factory T-30 screws.



19. Route the wire through the hole where the large black grommet was removed from. A small grabber tool can assist with this.



20. Insert the green clip from the new harness into the hole where the factory clip was located from step 12.



21. Route the new harness through the door and secure the grommet by gentle pulling it through until it locks into place.



22. Clip the large black grommet back into place. Reinstall the door module back onto the door. Plug the mirror harness back into the door module.
23. Adjust the mirror and secure the 2 T-30 screws.
24. Reinstall the door panel in reverse order.
25. Repeat the same procedure to install the passenger side mirror.

Switching Mirror Covers

If your GTI is not white you can remove the cover from the new mirrors and install your existing mirror covers. We recommend performing the switch with both mirrors off the car.

1. Push the inside corner of the mirror until it stops.



2. Using a soft pry tool, pry on the outside of the mirror. Extra care is needed to insure you do not damage the mirror.



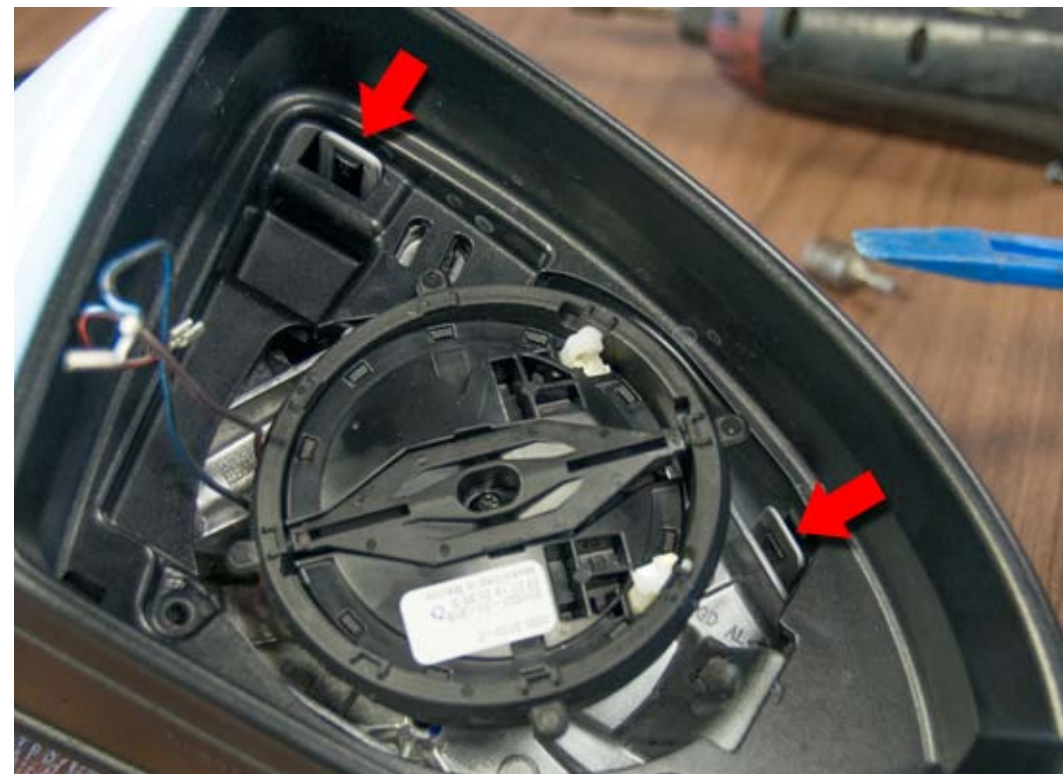
3. With the mirror removed disconnect the 2 wires for the mirror heater.



4. Remove the 2 T-15 torx screws.



5. Release the 2 tabs securing the mirror cover by pushing them downwards



6. Remove the mirror cover. And release the front cover by squeezing the retaining tab.



7. Install the mirror cover onto the lower portion of the mirror.



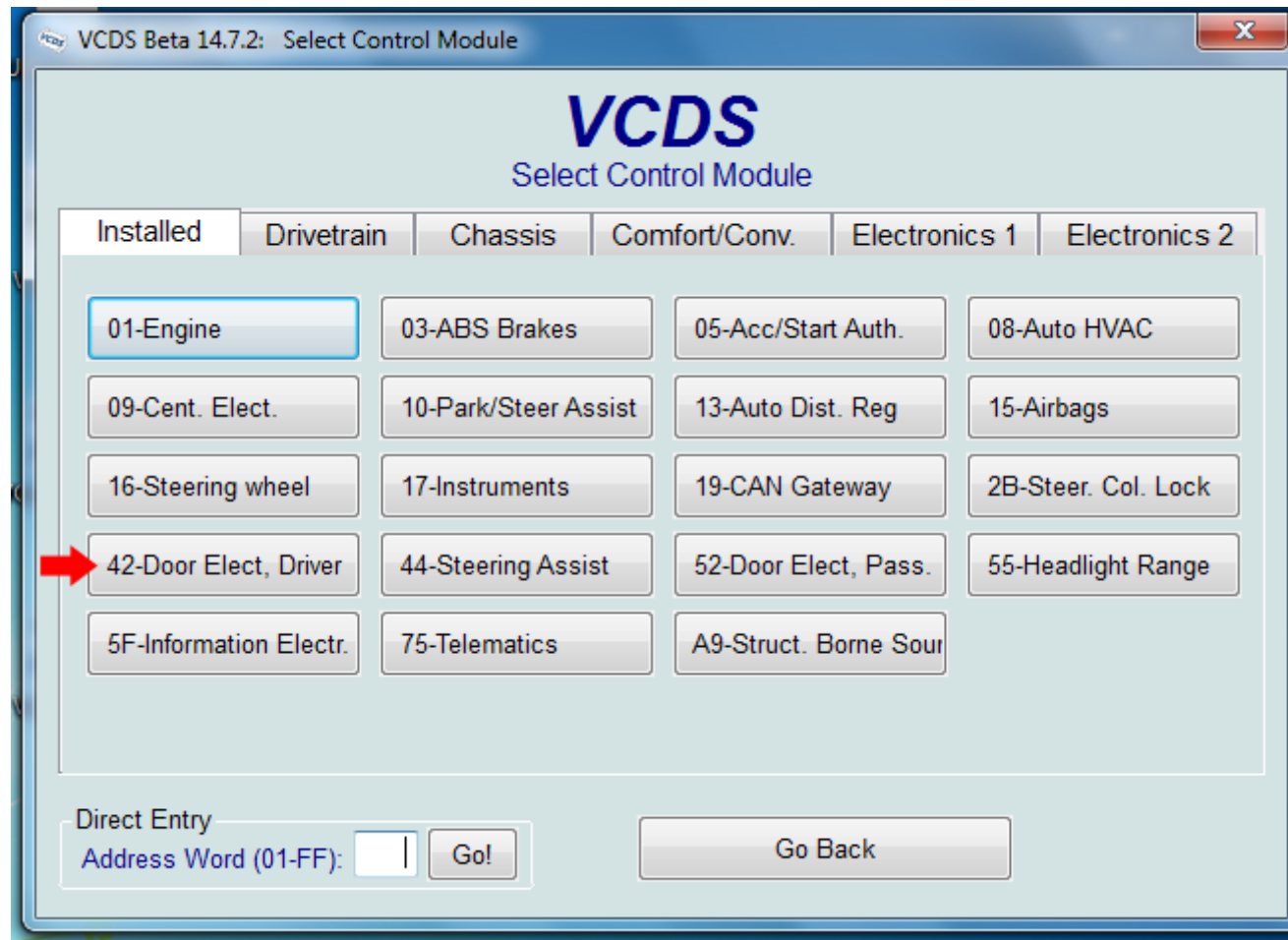
8. Reinstall the front cover and snap it until place. Reinstall the T-15 screws.



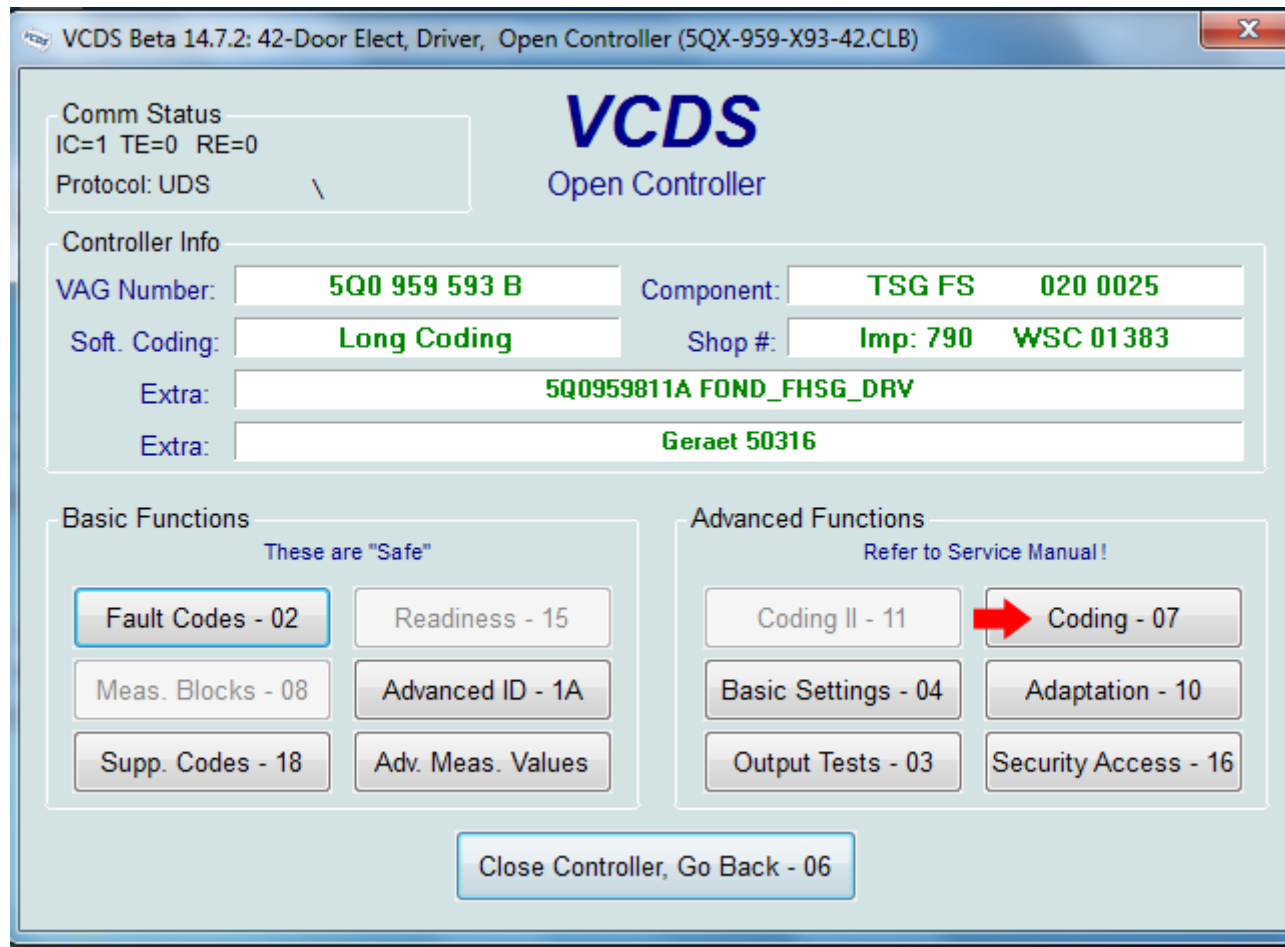
9. Reconnect the wires for the mirror heater.
10. Gently snap the mirror back into place.
11. Repeat this step to transfer the cover for the other mirror.

VCDS Programming

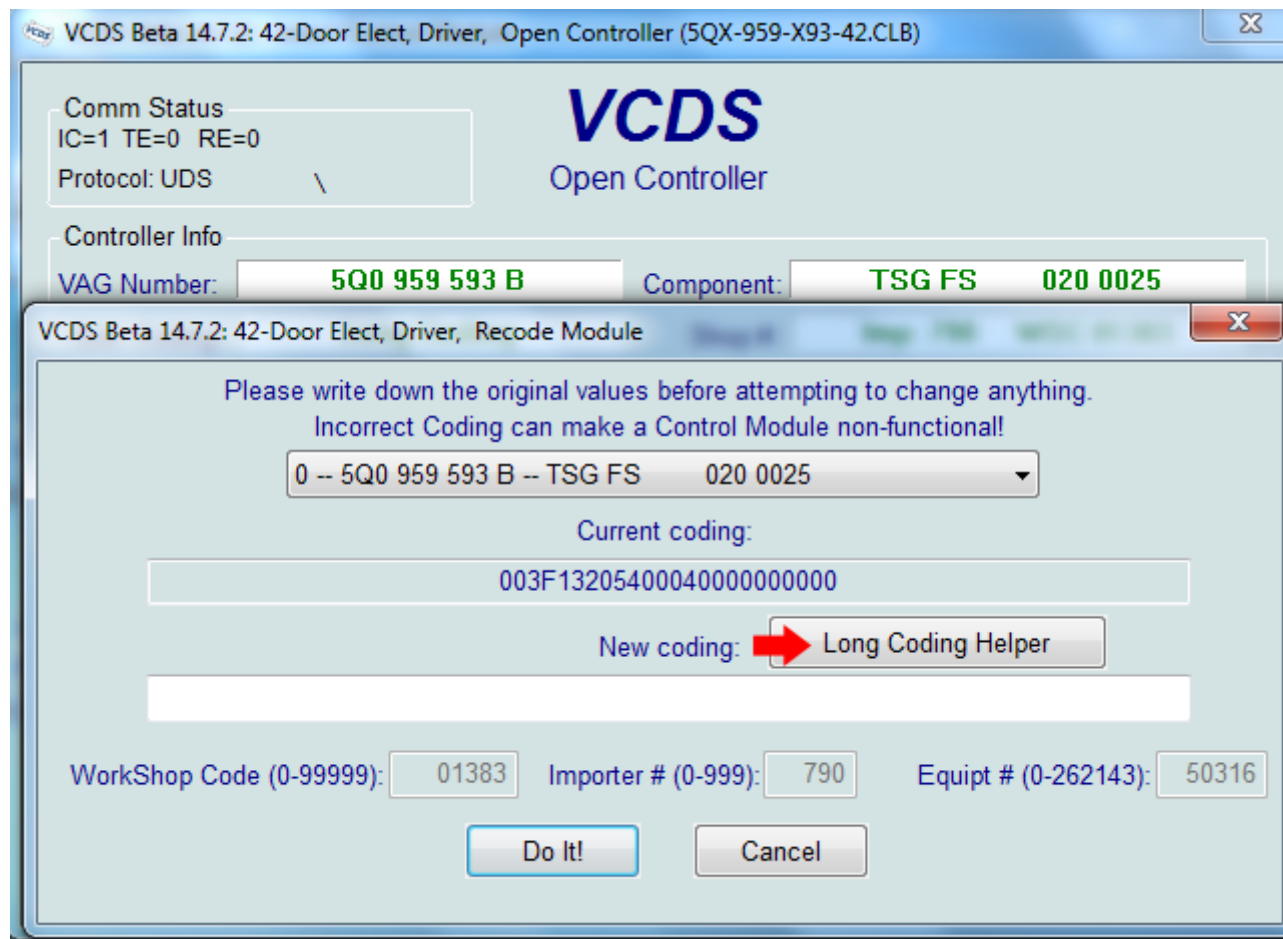
1. Connect to the vehicle with VCDS and open controller 42.



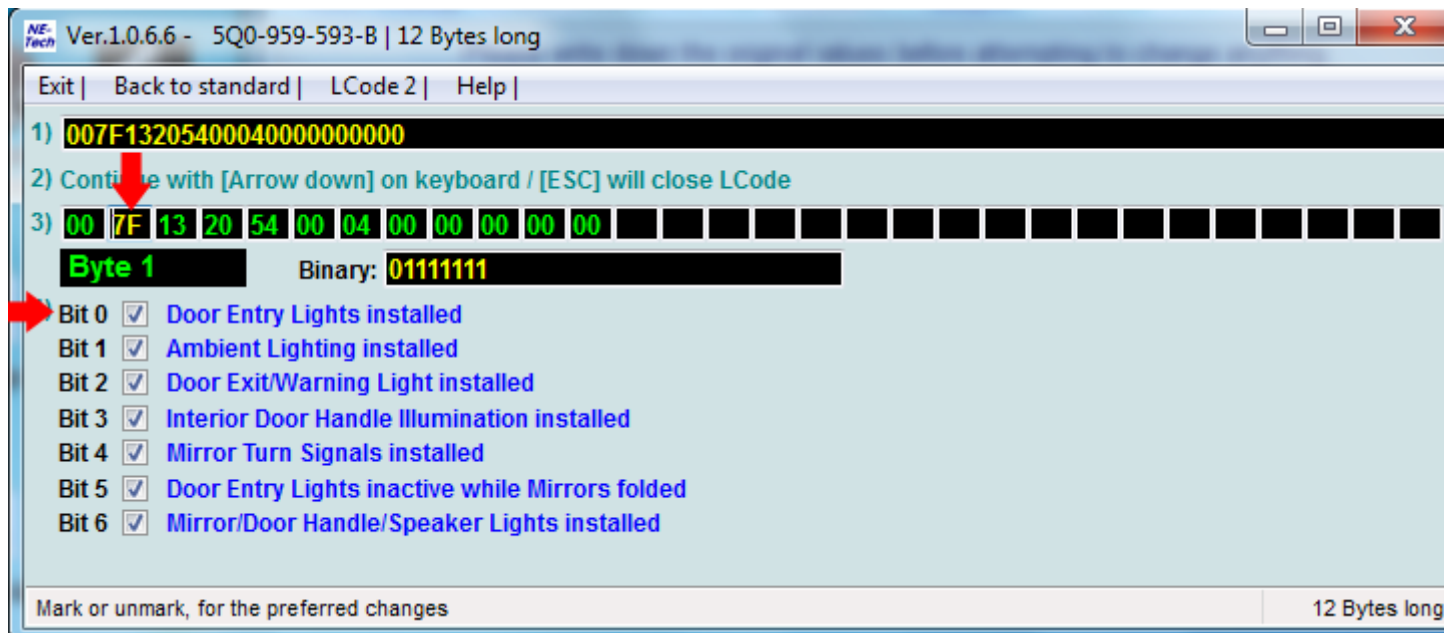
2. Once the controller opens click on 07.



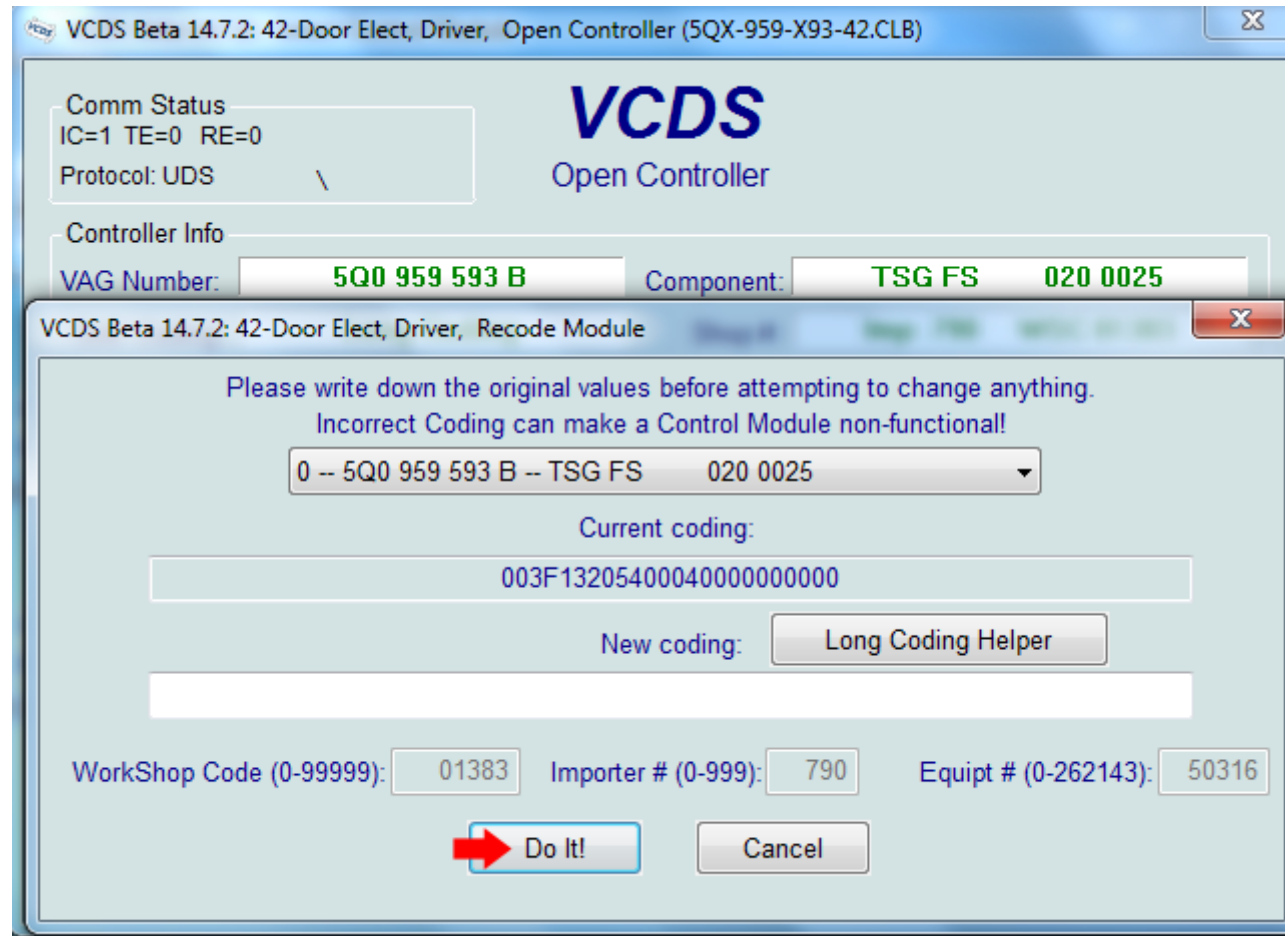
3. Save your existing coding and then click on long coding helper.



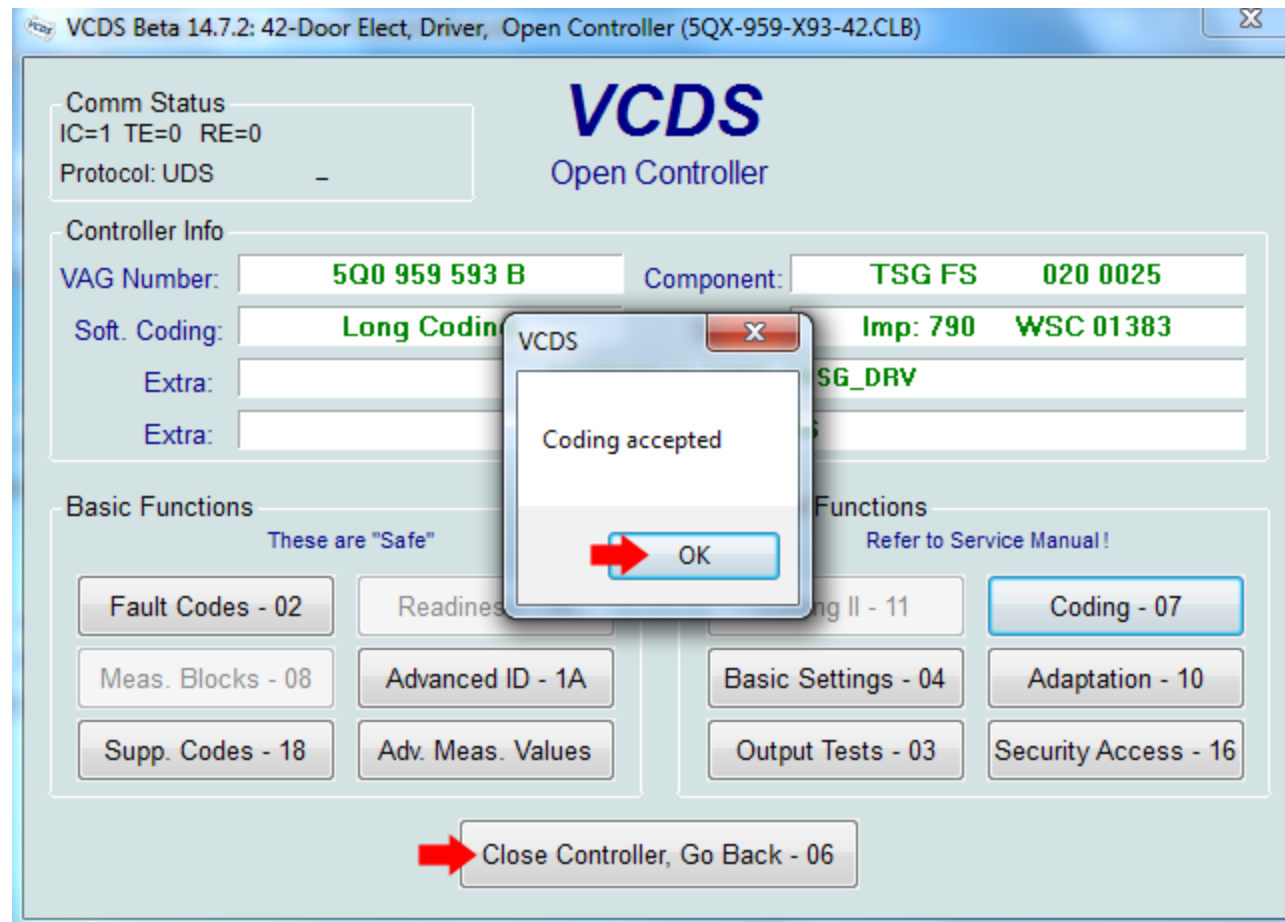
4. Click on the second box in number 3. Check Bit 0.



6. Exit the long coding helper and click Do It!



7. You should receive a confirmation the coding was accepted.
8. Click OK and close the controller.



9. Open controller 52 and repeat the same procedure.

